

# Eastview High School

A comprehensive and college preparatory public high school.

## 2018-2019 School Profile

### SUPERINTENDENT

Mary M. Kreger

### PRINCIPAL

Dr. Randall W. Peterson

### ASSISTANT PRINCIPAL FOR STUDENT SERVICES

Mr. Bruce Miller

### COUNSELING

#### Department Leader for College Planning / GT & Assessment:

Ms. Laura Horton

#### Department Leader for Counseling & Student Services:

Ms. Larinda Hodges

### Counseling Faculty

Mr. Quincy Davis  
Ms. Kelly Fisher  
Ms. Terri Greener  
Ms. Laura Horton  
Ms. Anne Scholen  
Mr. Mark Wanous

### Registrar

Ms. Cheryl Cross  
cheryl.cross@district196.org  
952.431.8913

### Counseling Secretary (Transcripts, College Visits, Counselor Contacts)

Ms. Molly Wellik  
molly.wellik@district196.org  
952.431.8914

### Counseling Office: 952.431.8914

Fax: 952.431.8932

CEEB Code: 242123

### DISTRICT 196 SCHOOL BOARD

Jackie Magnuson, Chairperson  
Joel Albright, Vice Chairperson  
Sachin Isaacs, Clerk  
Art Coulson, Treasurer  
Craig Angrimson, Director  
Mike Roseen, Director  
Bob Schutte, Director

### About Eastview

Eastview (est. 1997) is a comprehensive & college preparatory public high school located in Apple Valley, (suburban Minneapolis/St. Paul,) Minnesota with an enrollment of 2150 students in grades 9-12. Eastview has been distinguished as one of "America's Best High Schools" by Newsweek, US News and World Report and by the Washington Post.

### Our Learning Structure

Creative and progressive structuring of the facility and the school day schedule provides the ultimate options to support focused and engaged learning. All 9th and 10th graders are provided a touchstone personal learning experience as members of interdisciplinary learning teams, providing a challenging college readiness academic experience, supported by a conscientious team of teachers and an individualized learning plan. Student/teacher phasing, platooning and teaming are facilitated through quarter, trimester, semester and full-year courses, taught in both single period and block scheduling. Within the traditional foundation, time and space is leveraged to best address the needs of students, grade levels, ability and curriculum. The foundation of courses is 50 minutes in length, five days per week, four terms of 9 weeks for a total of 36 weeks per school year.

### Our Learning Facility

Our state-of-the-art digital classroom design includes built-in LCD's and SMART Technology; an infrastructure that includes building-wide wireless network/internet connections; 1:1 iPad learning environment; student mobile computing labs; high-end multimedia computing capabilities; a two-level Learning Commons with digital library research capabilities and fully-equipped television and digital editing studios, a 650 seat Performing Arts Center with a fly loft and scene shop; a dedicated dance studio and full-time curricular dance program; four gyms with a running track surrounding the main gym; a 4,500 square foot fitness center which is adjacent to 200 acres of playing fields, recreational facilities and competition stadiums.

### Our Learning Community

District 196 encompasses 110 square miles and is located 15 miles south of Minneapolis & St. Paul. 150,000 residents and 27,000 students are served in 19 elementary, 6 middle & 5 high schools.

### Our Faculty

College readiness is perpetuated by 230 faculty and staff members. Approximately 80% hold masters or doctorate degrees. 75% have 10 or more years of professional experience. All faculty members are engaged in focused collaborative teams of professional practice, where extensive action research informs instruction.

### Comprehensive & College Preparatory Curriculum

17 subject areas are offered, including: Honors & Advanced Placement; College in the Schools; AVID; STEM Scholar Program, five languages; emphasis on instrumental and vocal music, which includes an in-school private lesson program; theater & dance; Career Development opportunities; Special Education and work program alternatives. Courses are designed to personalize the students learning and interests to support college readiness. All students are engaged in developing an individualized learning plan to meet their learning needs and goals. A curriculum guide is posted at [www.district196.org/evhs](http://www.district196.org/evhs).

### Advanced Placement, Honors and U of M College in the Schools Courses (CIS)

Advanced Placement and Honors/Accelerated courses are offered across the curriculum and grade levels to meet the special needs of high-performing students interested in challenging and extending their intellectual potential. Over half of our students take an Advanced Placement course and the associated AP Exam. 90% of those students will receive a 3 or better score on an AP Exam.

### Advanced Placement/College Courses

AP Biology	AP Psychology
AP Calculus AB, BC	AP Statistics
AP Chemistry	AP Studio Art
AP Economics Macro, Micro	Multivariable Calculus
AP European History	Differential Equations
AP U.S. History	Linear Algebra
AP Language & Composition	CIS Mandarin Chinese
AP Literature & Composition	CIS English
AP Comp. Sci. A, Principles	CIS French & Spanish
AP Physics 1, C	CIS Anatomy Physiology

### Graduation Credit Requirements

12.00	English/Language Arts (4 years)
12.00	Social Studies (4 years)
9.00	Mathematics (3 years)
9.00	Science (3 years)
3.75	Physical Education
3.00	Wellness (Health) and Safety Ed.
17.25	Elective courses

### 66.00 Quarter credits for graduation

6200 140th St. West | Apple Valley, MN 55124 | 952.431.8900 | [eastview@district196.org](mailto:eastview@district196.org)

<http://www.district196.org/evhs>

## Fine & Performing Arts, Athletics, Activities, Intramurals, Community Service and Leadership

Opportunities beyond the school day play a substantial role in providing meaningful learning for our students. More than 80% of our student body is involved in state and nationally recognized activities. Over 110 different programs are offered in the fine and performing arts, athletics, student activities and academic honor societies. Our programs are designed to extend the spectrum of engagement; recreational involvement, personal development, competitive performance, leadership and service. Program summaries are posted at [www.district196.org/evhs](http://www.district196.org/evhs)

## Class Rank & Marking System

Class rank is determined by the grade point average of the quarter grades. All courses are included except those for which a pass/no-credit or no-grade mark is assigned. A student may choose to take one course each quarter for a pass/no-credit mark. **There are no weighted grades in the class rank calculation.**

### Marking System

A = 4.0	B- = 2.7	D+ = 1.3	P = Pass
A- = 3.7	C+ = 2.3	D = 1.0	NC = No Credit
B+ = 3.3	C = 2.0	D- = 0.7	I+ = In Progress
B = 3.0	C- = 1.7	F = 0.0	

### Honors Ranking System

Toward encouraging students at Eastview High School to take the most challenging courses they are capable of studying, we incorporate a dual ranking system. Students will receive either a Regular Rank or an Honors Rank. The regular rank will rank students against all students in the class; the honors rank will rank qualifying honors students against other honors students who have taken a similarly difficult course schedule.

### To qualify for an Honors Rank at Eastview High School, students must meet the following criteria:

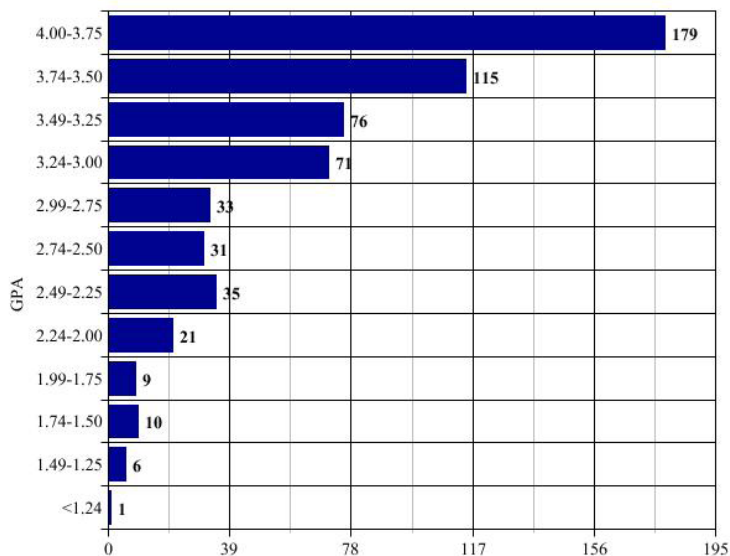
- Take at least thirty-two (32) quarter courses of Honors/AP core classes throughout grades 9-12. This must include eight (8) quarter courses in each of the 9th, 10th, 11th and 12th grade years.
- Students must earn a grade of "C" or better for an Honors/AP class to count toward the total/grade-level minimums.

NOTE: This is not "weighted" grading or ranking. It is simply a "dual" ranking system wherein ONLY students meeting the above qualifications would have an *Honors Rank*.

## Our Mission: Educational Equity

Eastview believes that "all students can learn" and are provided the opportunity, support (prevention, intervention and post-vention) and personalized engagement to believe and perform at their assessed ability level as an Eastview Scholar. All of our scholars engage in a college readiness programming that prepares them for continued post-secondary academic and personal success.

Class of 2019 12th Quarter GPA Distribution



Total Number of Students = 587

National Merit Scholarship Qualifying Test

Class	Commended Scholars	Semi / Finalists	Total
2019	19	1	20
2018	14	8	22
2017	6	3	9
2016	10	6	16

ACT (Core Students)

Class	Students	Eng	Math	Read	Sci	Avg. Comp
2018	500	23.1	24.7	24.3	24.2	24.2
2017	516	23.1	23.9	23.9	23.8	23.8
2016	476	23.4	24.1	24.4	24.1	24.2
2015	392	24.0	24.8	25.2	24.6	24.8

Average Composite ACT Score of all Students for 2018 is 23.7

ACT (Honors Ranked Students)

Class	Avg. Composite ACT for *Honors Ranked Students
2018	29.4
2017	28.9
2016	28.6
2015	28.6

\*Honors Ranked Ranking: 2 or more full-year honors or AP courses for 4 years.

AP Tests Results (includes grades 10, 11 and 12)

Year	# of Exams	% Students 3+	# of Students
2018	1314	89.0	619
2017	1267	88.2	586
2016	1296	88.9	612
2015	1294	84.5	627

Note: 56% of students in the Class of 2017 took an AP exam and were successful securing a score of 3 or above.

AP Scholars

Year	Scholar	Honor	Distinction	National	Total
2018	115	50	96	23	284
2017	101	41	111	17	270
2016	126	44	113	16	299
2015	114	54	98	23	289

Scholar 3 or + on 3 or more AP exams.  
 Honor 3 or + on 4 or more AP exams & avg of 3.25 on all\* AP exams.  
 Distinction 3 or + on 5 or more AP exams & avg of 3.5 on all\* AP exams.  
 National 4 or + on 8 or more AP exams and an avg of 4 on all\* AP exams.

## Eastview High School Classes of 2014-2018 Post-Secondary Plans

Our year-end survey of the Class of 2016 indicated that 96% were intending to enroll in some type of post-secondary or advanced training after graduation. 80% intended to enroll in a four-year college, and 16% in a two-year college or technical school.

Academy College	Cornell University	Iowa State University
Academy of Art University	Cornish College	IPR College of Creative Arts
American Musical and Dramatic Academy	Creighton University	Itasca Community College
Angelo State University	Culinary Institute of America	Jackson State University
Anoka-Ramsey College	Dakota County Technical College	James Madison University
Argosy University-Twin Cities	Delaware County Community College	Kansas State University
Arizona State University	DePaul University	Kent State University
Arkansas State University	Des Moines Area Community College	Kenyon College
Augsburg College	Drake University	Kirkwood Community College
Augustana College (SD)	Dunwoody College of Technology	Lake Forest College
Austin Community College	Eastern Kentucky University	Lake Superior College
Aveda Institute Minneapolis	Eastern Mennonite University	Lee-McRae College
Ball State University	Eastern Michigan University	Liberty University
Belmont University	Elmhurst College	Limestone College
Bemidji State University	Emerson College	Lawrence University
Benedictine University	Emory University	Loyola University Chicago
Bethel University-MN	Endicott College	Loyola Marymount University
Bob Jones University	Evangel University	Luther College
Boston College	Fairfield University	Marine Corps Institute
Boston University	Fairleigh Dickinson University	Macalester College
Bowdoin College	Fashion Institute of Design	Marquette University
Bradley University	Florida Gulf Coast University	McNally Smith College of Music
Brandeis University	Florida Southern University	Mesa Community College
Brigham Young University	Florida State University	Metropolitan State University
Brown University	Fordham University	Miami University, Oxford
California Institute of Technology	Gallatin College at Montana State University	Michigan State University
California Polytechnic University	George Washington University	Michigan Technological University
California State University, Northridge	Georgia Gwinnett College	Middlebury College
Carleton College	Georgia Institute of Technology	Milwaukee School of Engineering
Carthage College	Glendale Community College	Minneapolis Business College
Central College	Grand Canyon University	Minneapolis College of Art and Design
Central Michigan University	Grinnell College	Minneapolis Community College
Centre College	Gustavus Adolphus College	Minnesota School of Beauty
Century College	Hamline University	Minnesota State University, Mankato
Coe College	Harvard University	Minnesota State University, Moorhead
Colby College	Hastings College	Missouri Southern State University
College of St. Benedict	Hennepin Technical College	Montana State University
College of St. Scholastica	Hope College	Mount St. Mary's College
Colorado Mesa University	Indian Hills Community College	New York University
Colorado School of Mines	Indiana University at Bloomington	Normandale Community College
Colorado State University	Indiana University of Pennsylvania	North Carolina A & T State University
Columbia College - Chicago	Inver Hills Community College	North Central University
Concordia College - Moorhead	Iona College	North Dakota State University
Concordia University at St. Paul	Iowa Lakes Community College	North Dakota State College of Science

## Eastview High School Classes of 2014-2018 Post-Secondary Plans

North Iowa Community College	Susquehanna University	University of North Carolina
Northeastern University	Syracuse University	University of Northern Iowa
Northern Michigan University	Texas Tech University	University of Northwestern
Northwestern College	Texas Christian University	University of Notre Dame
Northwestern University	Tuffs University	University of Pennsylvania
Nova Southeastern University	Tulane University	University of San Francisco
Ohio State University	United States Air Force Academy	University of Sioux Falls
Oklahoma State University	United States Coast Guard Academy	University of Southern California
Olin College of Engineering	United States Military Academy	University of Southern Indiana
Orange Coast College	Universal Technical Institute	University of St. Thomas
Pacific Lutheran University	University of Alabama	University of Texas, Austin
Pennsylvania State University, Park	University of Arizona	University of Texas, El Paso
Pima Community College	University of California, Berkeley	University of Toledo
Pine Technical College	University of California, Davis	University of Utah
Purchase College State University of New York	University of California at Los Angeles	University of Vermont
Purdue University	University of California at San Diego	University of Washington
Regency Beauty Institute	Universal Technical Institute	University of Winnipeg
Regent's University London	University of Calgary	University of Wisconsin, Eau Claire
Rensselaer Polytechnic Institute	University of Central Florida	University of Wisconsin, La Crosse
Rice University	University of Colorado at Boulder	University of Wisconsin, Madison
Ringling College of Art and Design	University of Connecticut	University of Wisconsin, Milwaukee
Rochester Community & Technical College	University of Denver	University of Wisconsin, Oshkosh
Rochester Institute of Technology	University of Georgia	University of Wisconsin, River Falls
Rockhurst University	University of Hartford	University of Wisconsin, Superior
Sacred Heart University	University of Illinois – Chicago	University of Wisconsin, Stout
Saint John's University	University of Illinois at Urbana/Champaign	University of Wyoming
Saint Mary's University of Minnesota	University of Iowa	Utah State University
San Diego Mesa College	University of Hartford	Vanderbilt University
San Diego State University	University of Kansas	Valparaiso University
Seattle University	University of Maine	Viterbo University
South Dakota School of Mines and Technology	University of Manitoba	Waldorf University
South Dakota State University	University of Maryland	Wartburg College
Southeastern University	University of Massachusetts	Washington State University
Southern Connecticut State University	University of Michigan	Washington University in St. Louis
Southern Virginia University	University of Minnesota, Crookston	Wellesley College
Southwest Minnesota State University	University of Minnesota, Duluth	Wheaton College IL
St. Catherine University - St. Paul	University of Minnesota, Morris	Wheeling Jesuit University
St. Cloud State University	University of Minnesota, Rochester	Wilbur Wright College
St. Cloud Technical & Community College	University of Minnesota, Twin Cities	William Woods University
St. Olaf College	University of Missouri Columbia	Wingate University
St. Paul College	University of Montana, Missoula	Winona State University
Stanford University	University of Nebraska at Lincoln	Xavier University
Studio School of Los Angeles	University of Nebraska at Omaha	Yale University

6200 140th St. West | Apple Valley, MN 55124 | 952.431.8900 | eastview@district196.org  
<http://www.district196.org/evhs>

District 196 does not discriminate in employment or in any of its programs and activities, including vocational opportunities, on the basis of race, color, creed, religion, national origin, sex, marital status, status with regard to public assistance, familial status, membership or activity in a local human rights commission, disability, sexual orientation, age or genetic information. District 196 provides equal access to designated youth groups.

The Director of Human Resources, Tom Pederstuen (651-423-7859 – tom.pederstuen@district196.org) has been designated to respond to employment-related inquiries regarding the non-discrimination policies including Title IX. The Director of Elementary Education, Sally Soliday (651-423-7782 – sally.soliday@district196.org) and the Director of Secondary Education, Dr. Mark Parr (651-423-7712 – mark.parr@district196.org) have been designated to respond to student-related inquiries regarding the non-discrimination policies including Title IX. The Director of Special Education, Mary Kreger (651-423-7629 – mary.kreger@district196.org) has been designated to respond to inquiries concerning the rights of a student with a disability (504 Coordinator). The mailing address for all directors is 3455 153rd Street W, Rosemount, MN 55068.