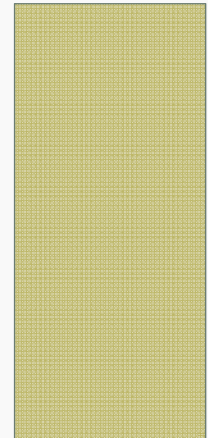


# 2012 PAYABLE 2013 LEVY CERTIFICATION

**INDEPENDENT SCHOOL DISTRICT 196**  
ROSEMOUNT-APPLE VALLEY-EAGAN PUBLIC SCHOOLS  
**DECEMBER 10, 2012**

*Educating our students to reach their full potential*



# AGENDA

- Levy certification process
- Basic school funding
- 2012 Payable 2013 Levy Analysis

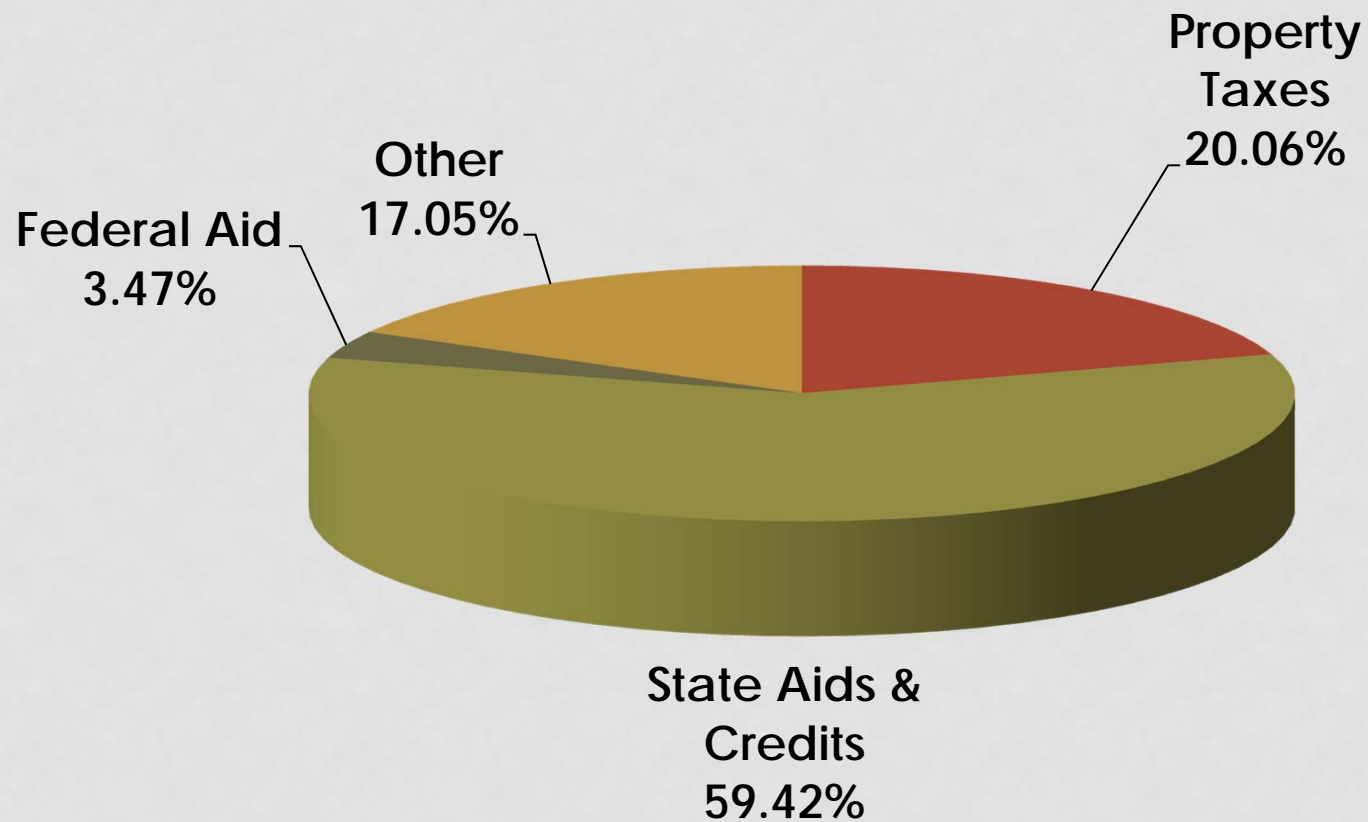
# LEVY CERTIFICATION PROCESS

- Started in July/August – submission of data to Minnesota Department of Education
- September – School Board set levy limit
- November – County sent out proposed tax statements
- December – Final levy certification by School Board

# HOW SCHOOLS ARE FUNDED



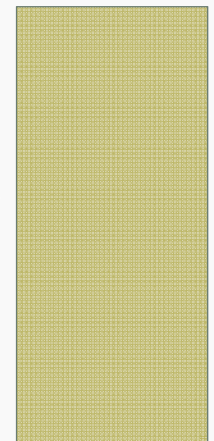
# SOURCE OF REVENUES - ALL FUNDS



# HOW ARE LOCAL SCHOOL TAXES DETERMINED?

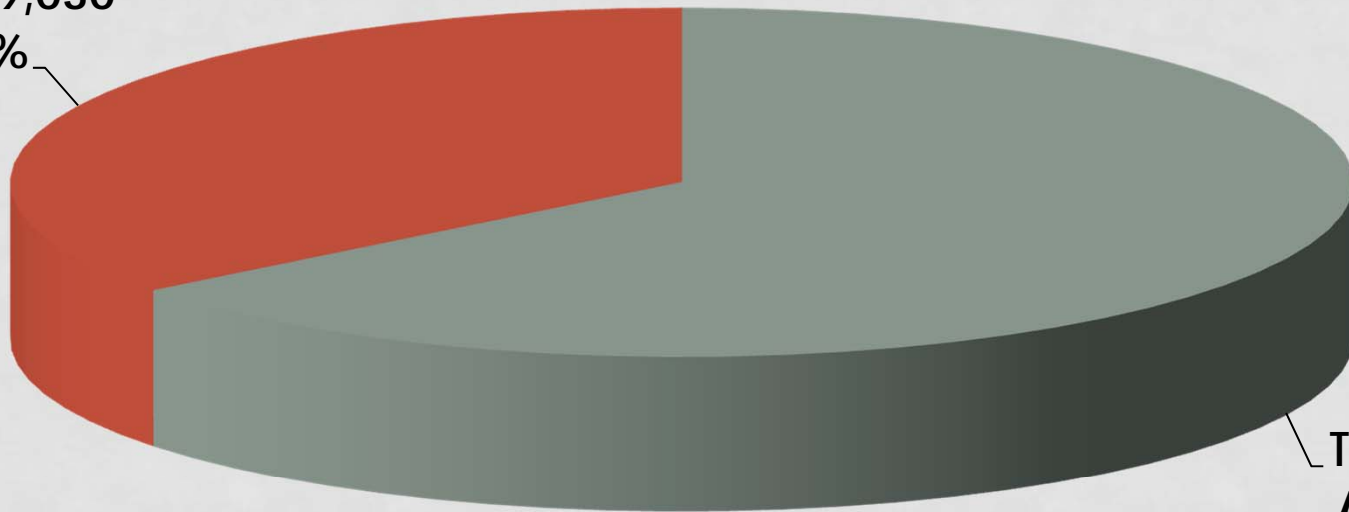
- Voter approved
  - Bond votes
  - Operating Levy votes
- School Board decisions (Other Local)
  - Authority is limited through legislation
  - Special levy authority...Safe Schools levy, Alternative Facilities levy, Health and Safety levy etc.

**WHAT IS THE SCHOOL DISTRICT'S  
RECOMMENDED LEVY?**



**Levy Payable 2013**  
**Total Levy \$73,784,529**

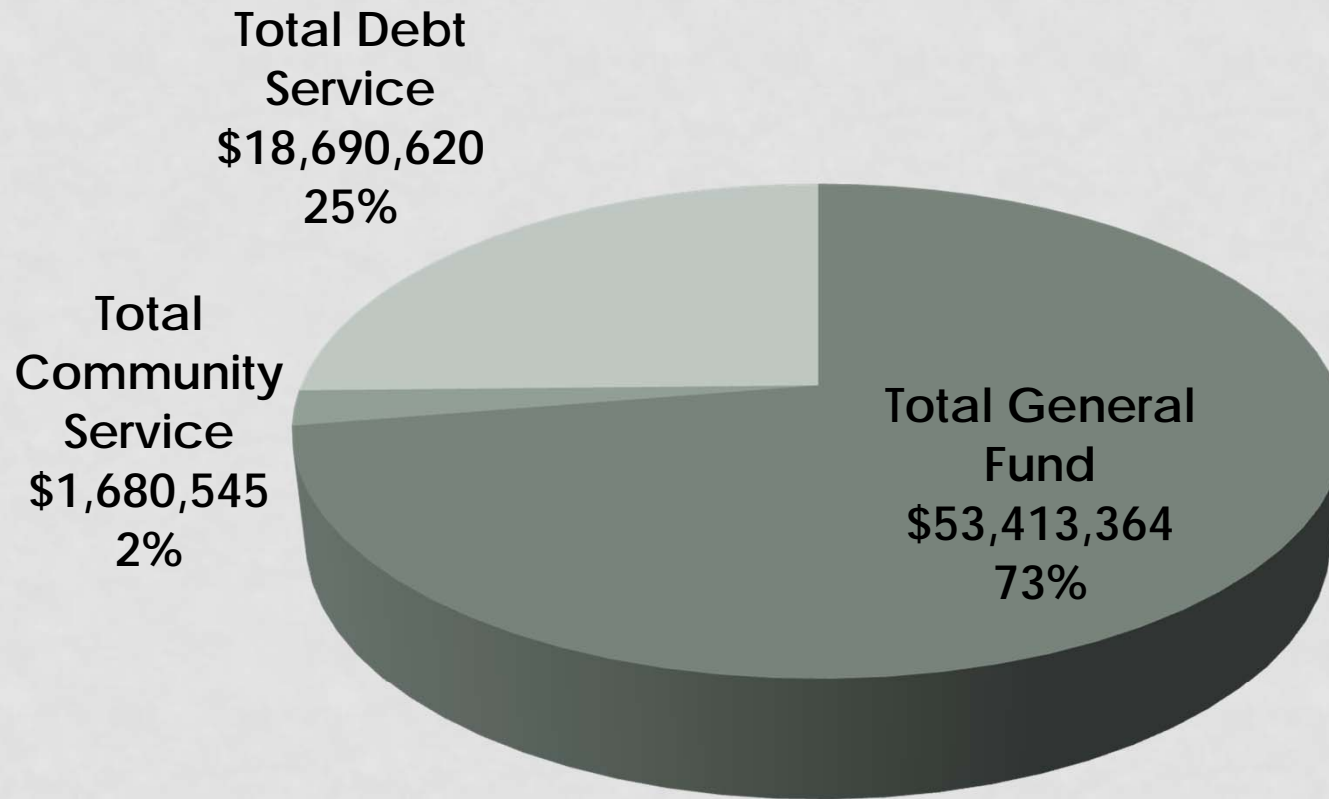
**Total Board  
Determined  
\$26,279,030  
36%**



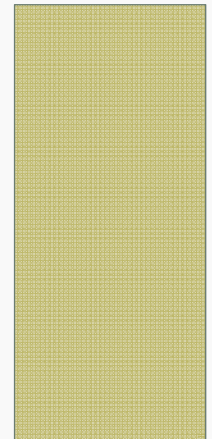
**Total Voter  
Approved  
\$47,505,499  
64%**



## Levy Payable 2013 By Fund

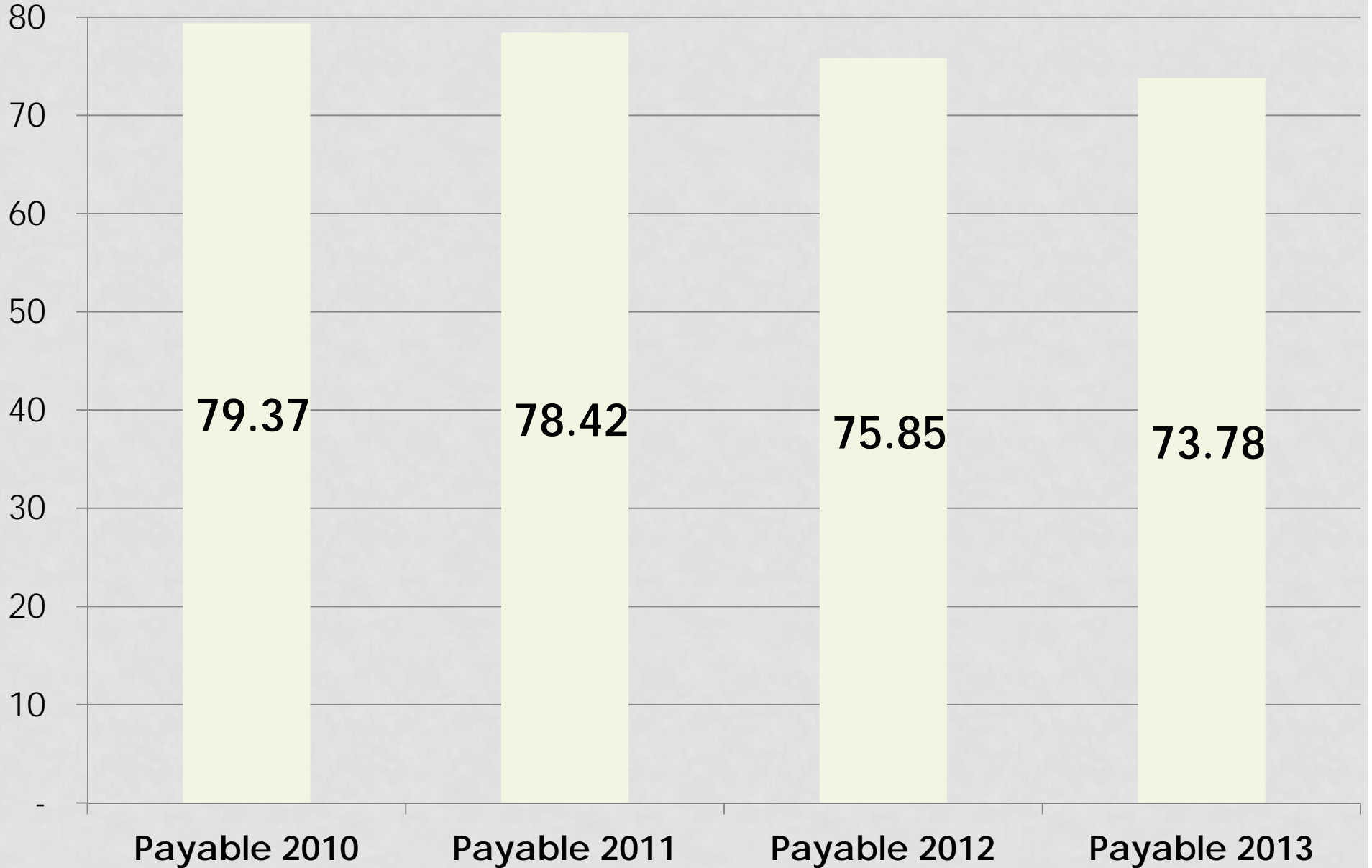


**HOW DOES THIS COMPARE TO  
PREVIOUS YEARS?**



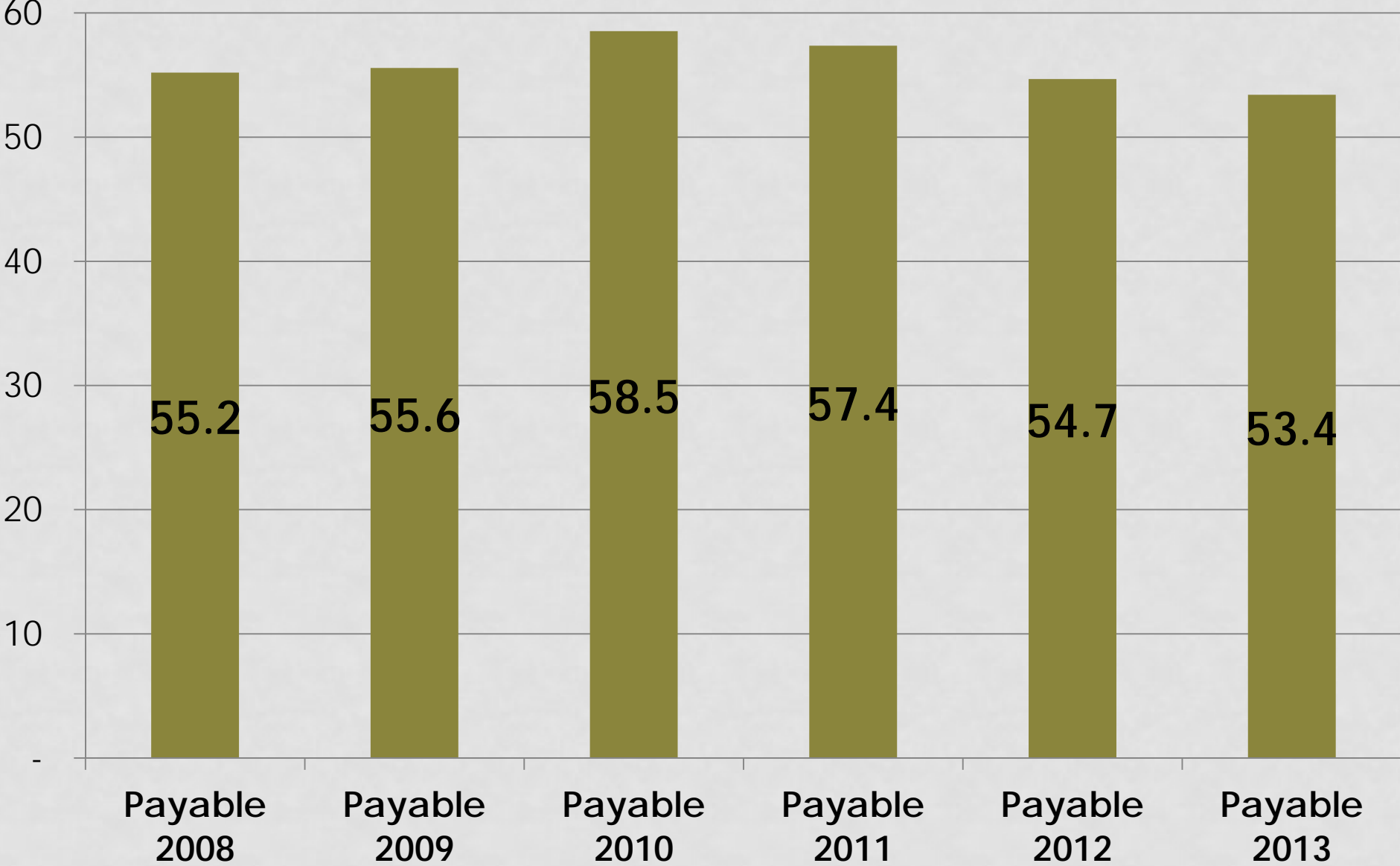
# Total School Local Levies

Millions



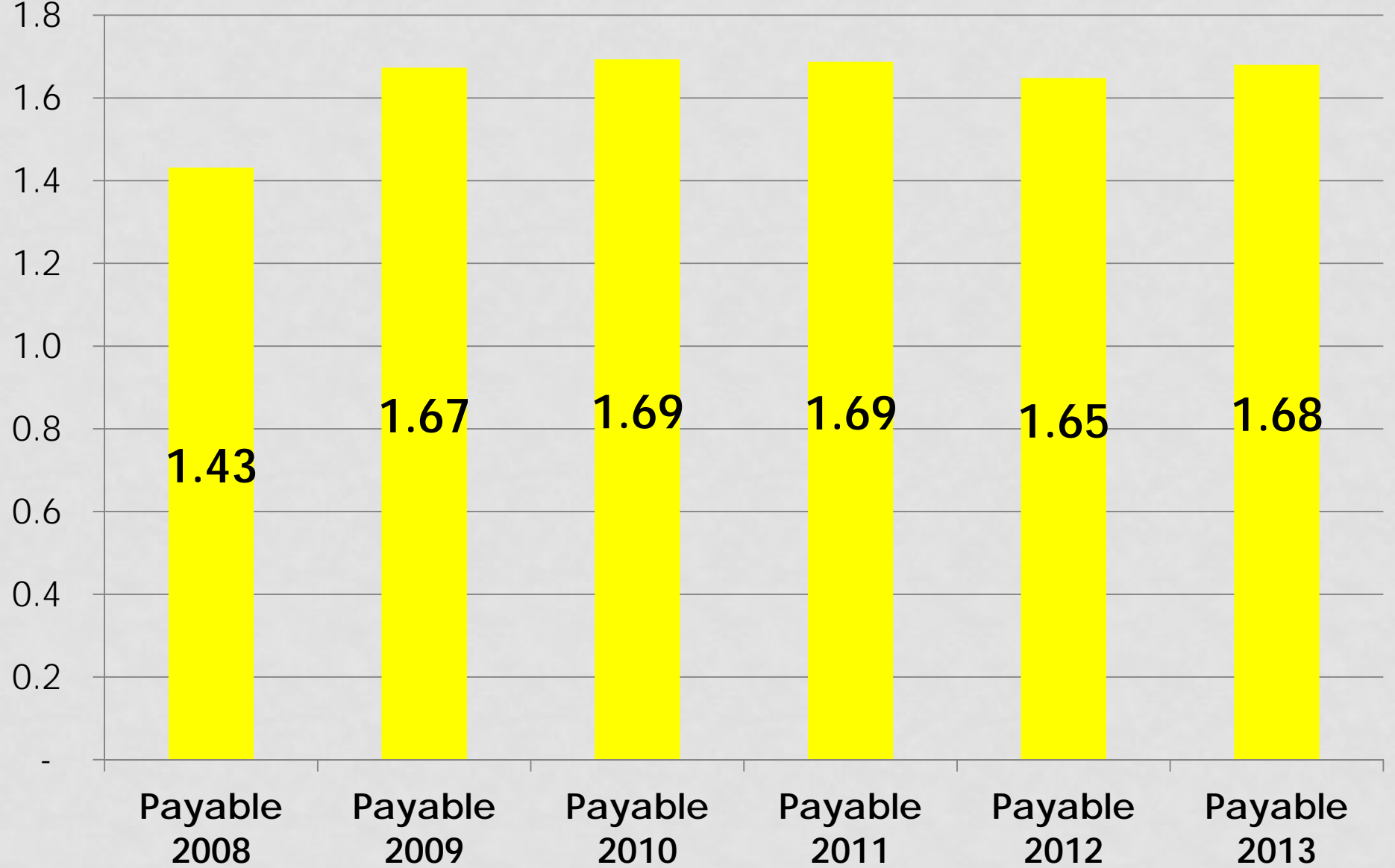
# Total General Fund Levy

Millions



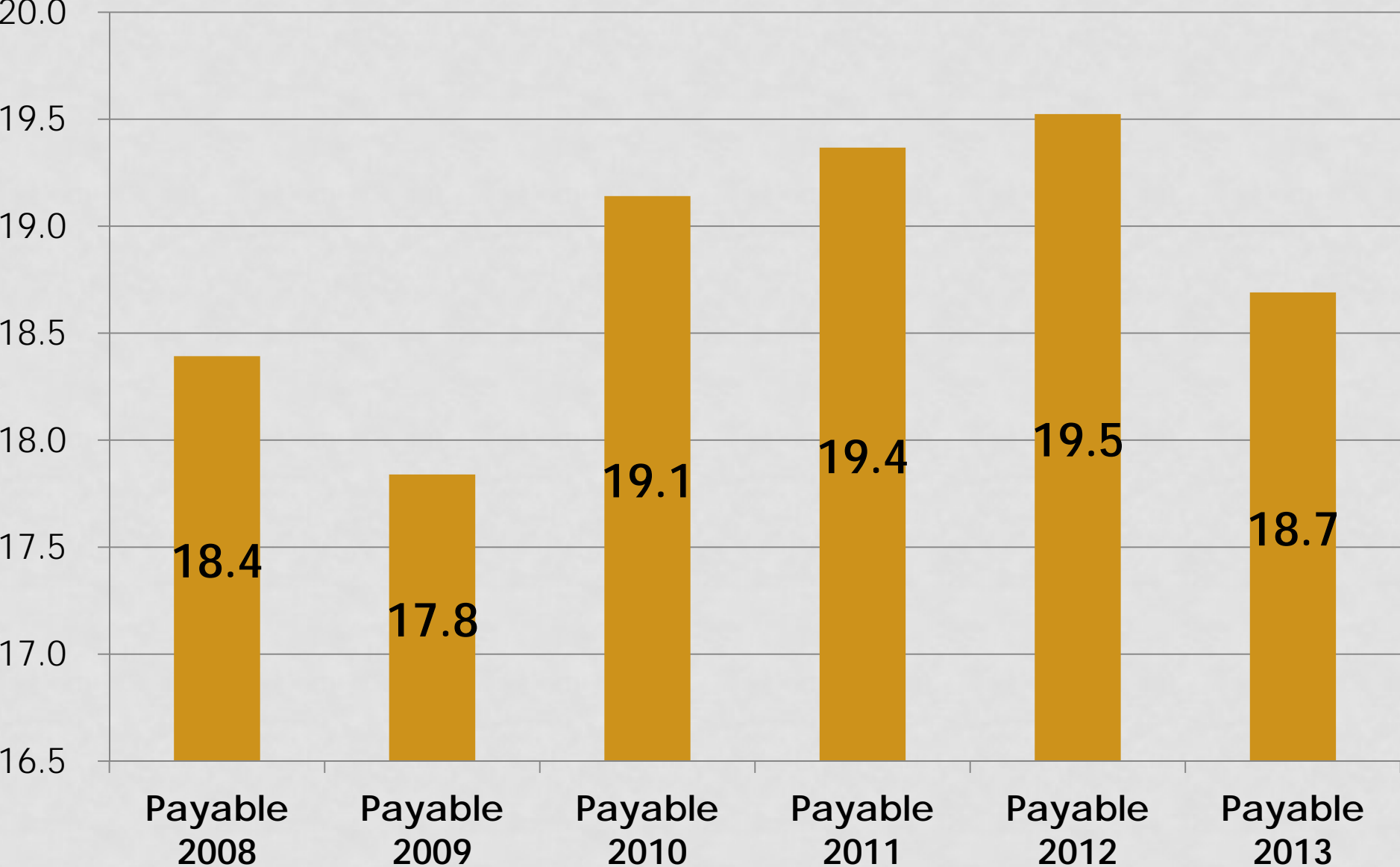
# Community Education Levy

Millions



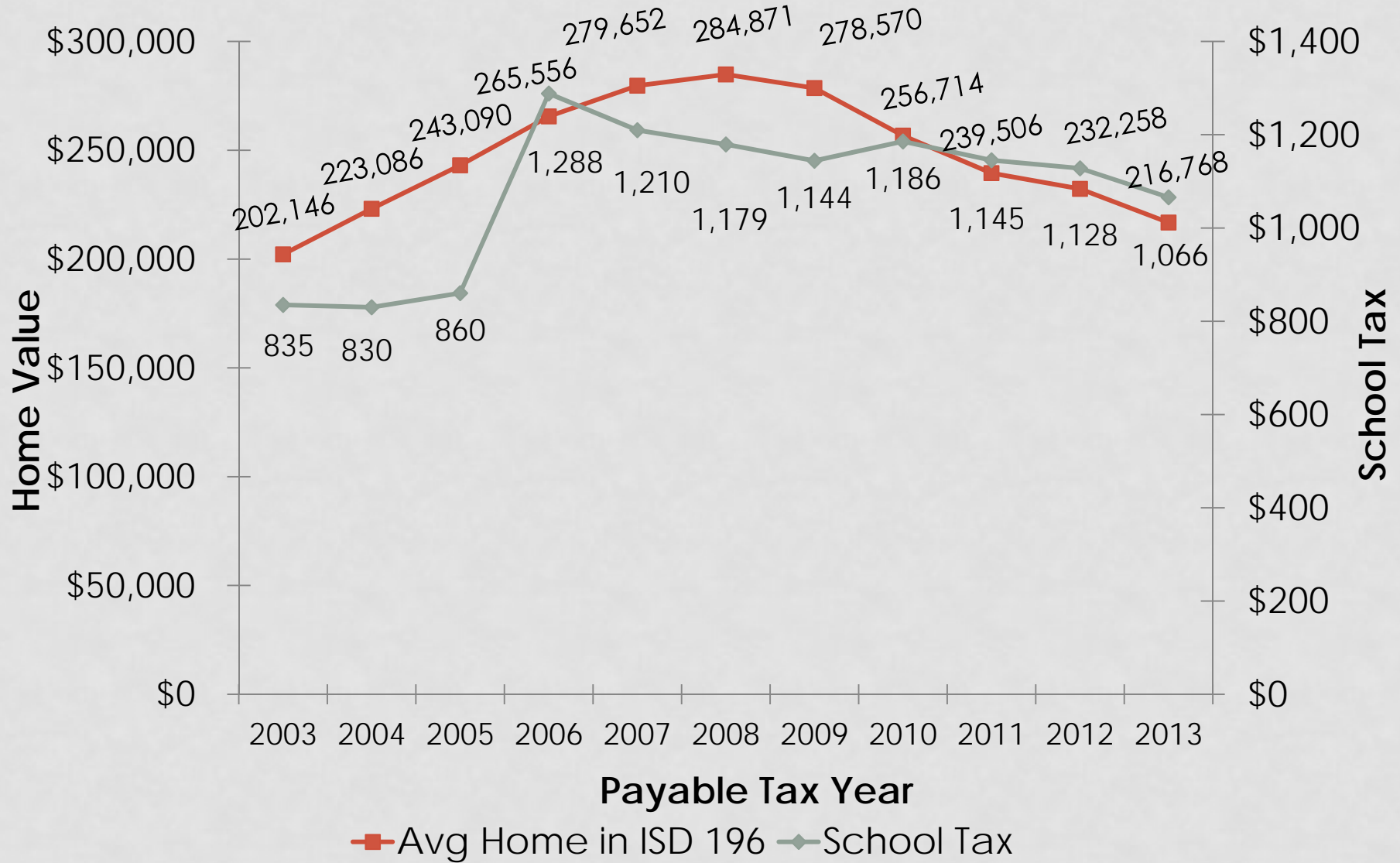
# Total Debt Service Levy

Millions



How Will This Impact  
Taxes In The District 196  
Community?

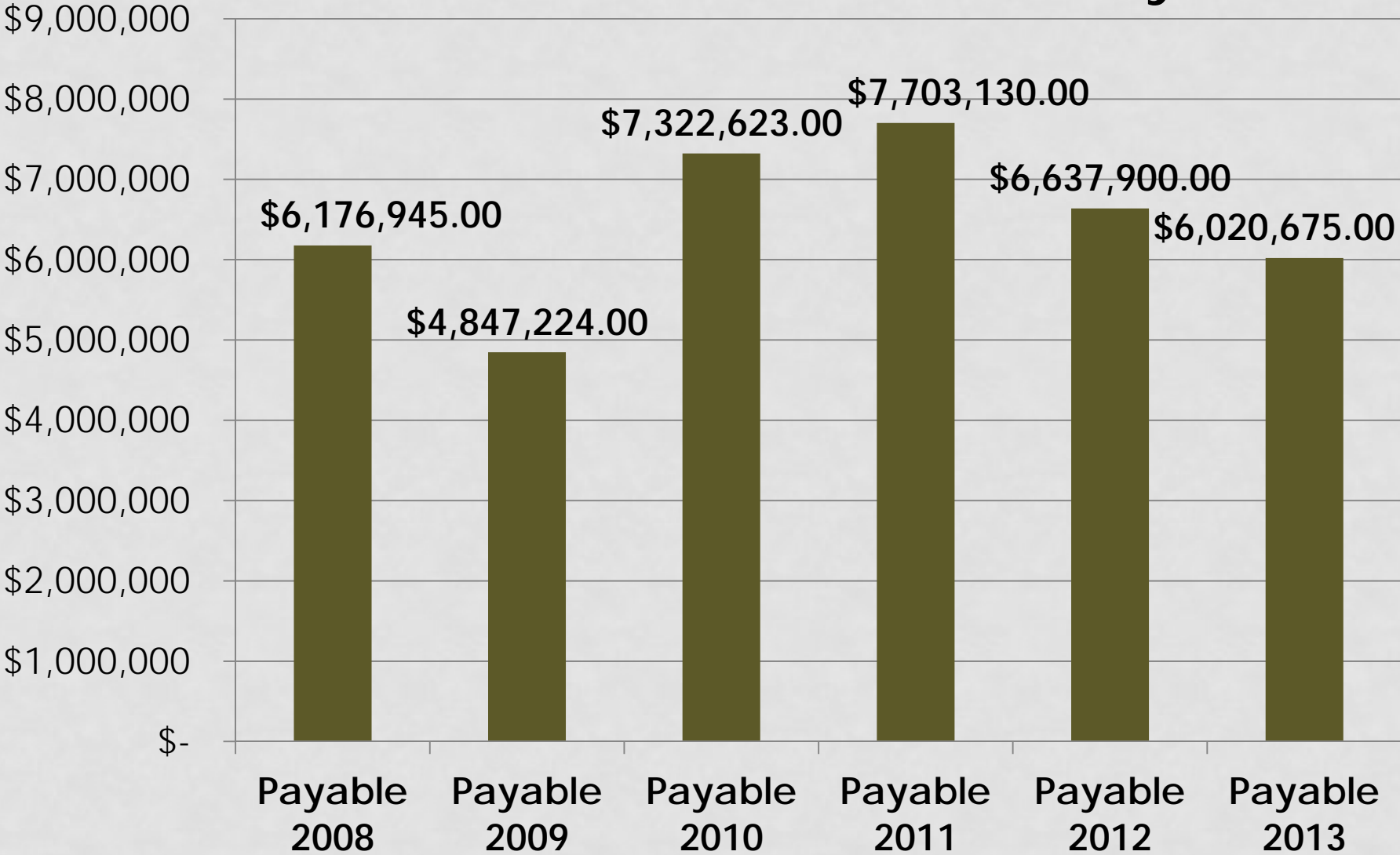
# School Taxes Payable on Avg. Value Home



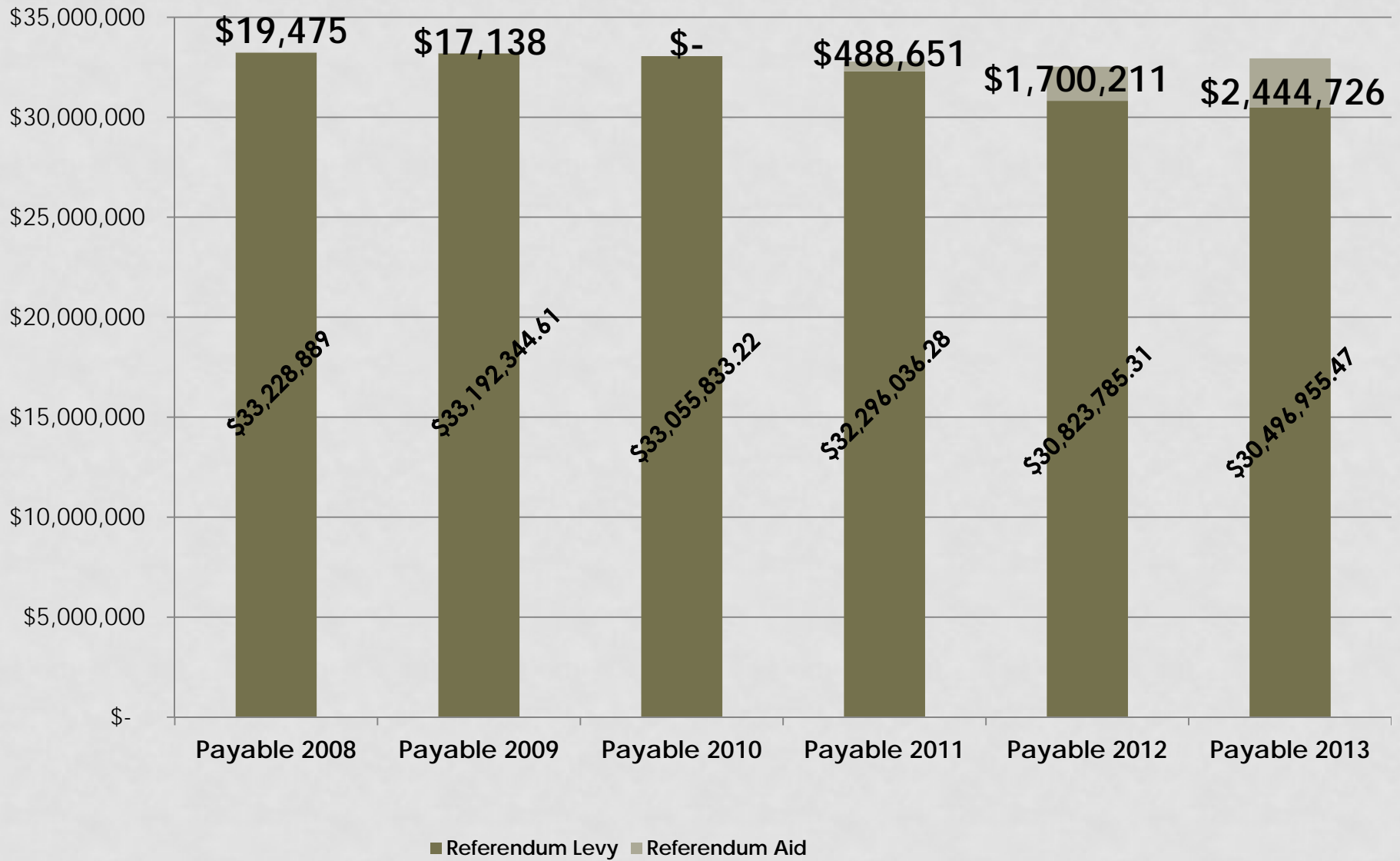


Questions?

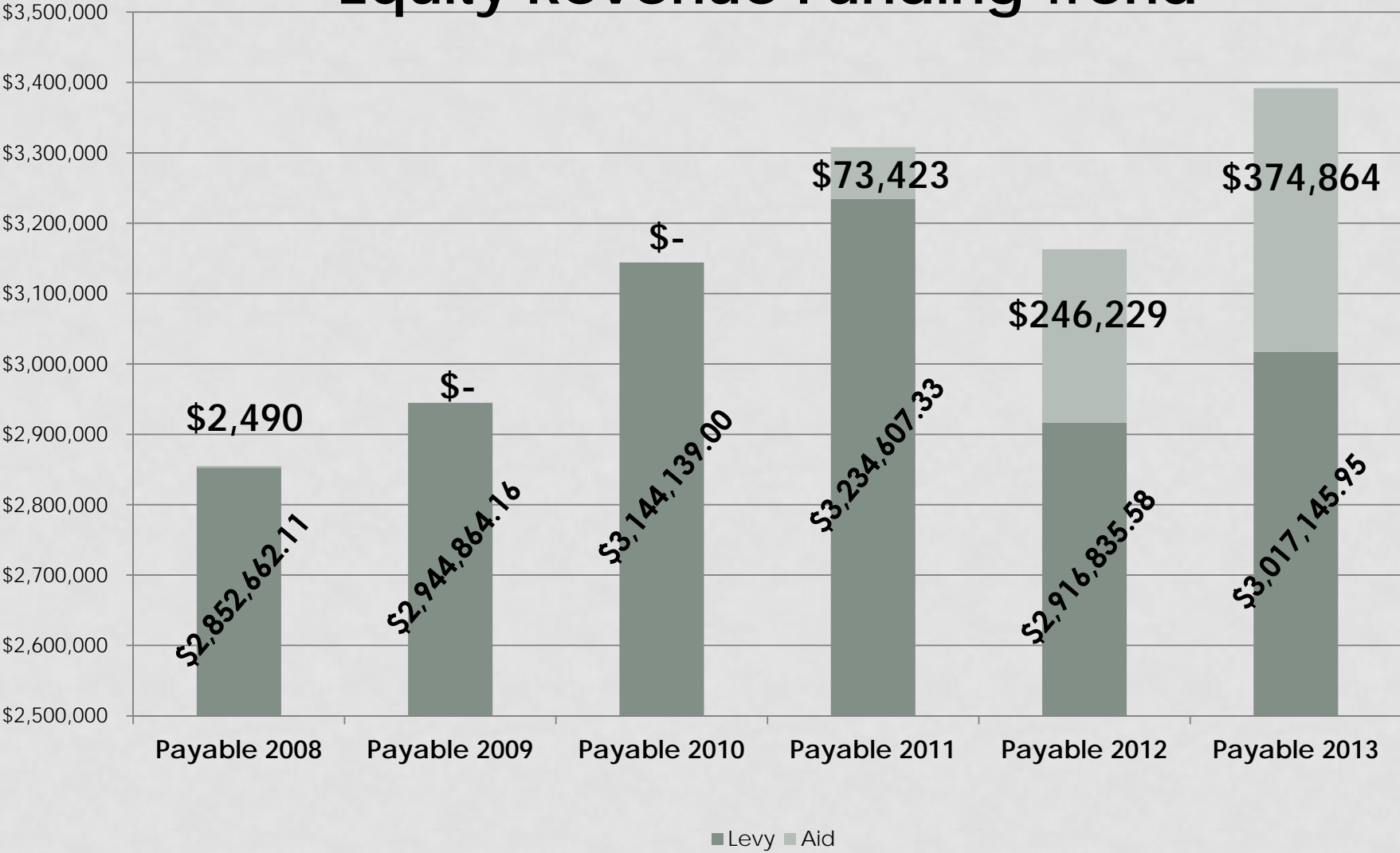
# Alternative Facilities Levy



# Referendum Funding Trend



# Equity Revenue Funding Trend



# Operating Capital Revenue Funding Trend

